

CERTIFIED LAND CORNER RECORDATION

DESCRIPTION OF CORNER EVIDENCE FOUND, AND ORIGINAL RECORD (if known)

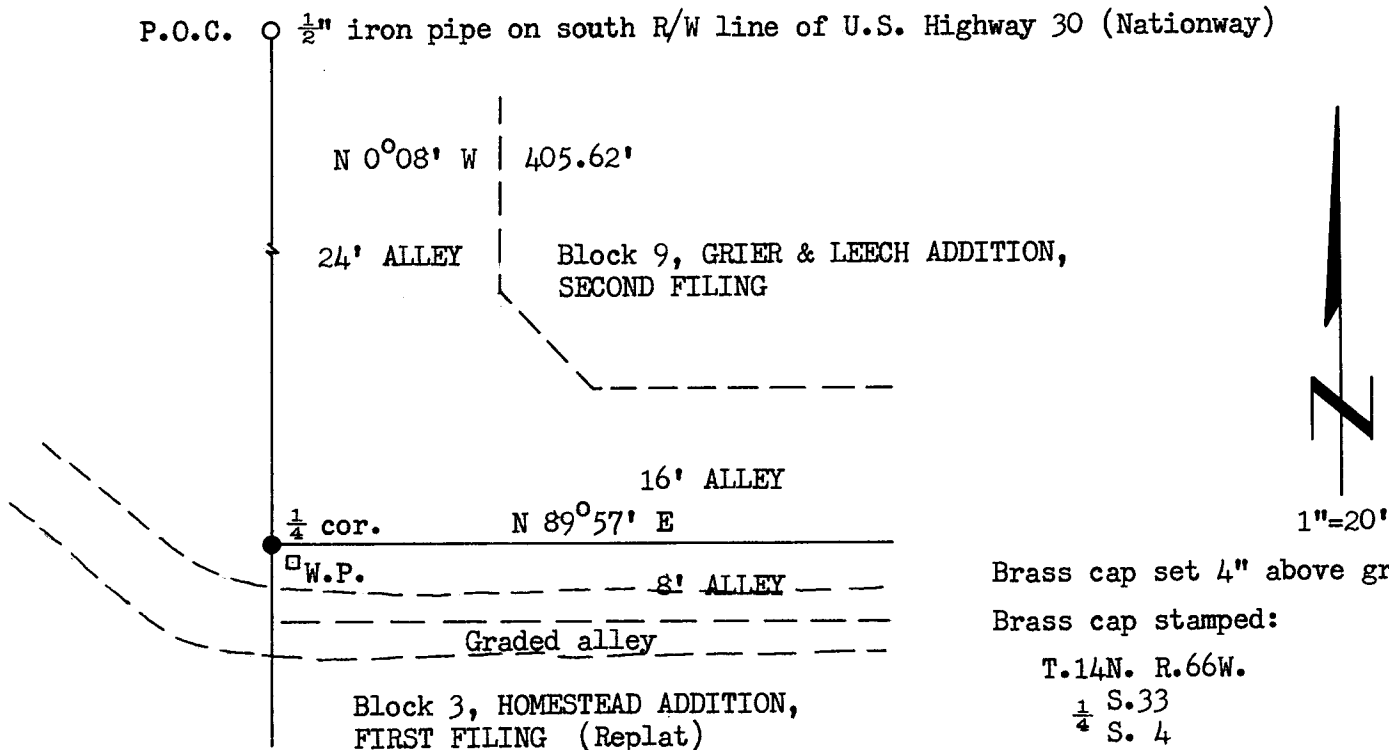
LOCATION Found a 1/2" dia. x 18" long iron pipe.

1/4 S.33
 1/4 S. 4
 T.14N., R.66W.
 T.13N.
 6th P.M.

DESCRIPTION OF MONUMENT AND ACCESSORIES ESTABLISHED TO PERPETUATE THE ORIGINAL LOCATION OF THIS CORNER:

At the corner: Set a 1 1/2" dia. x 30" long iron pipe with brass cap.
 Accessories: Set a 4" x 4" x 4' long Redwood post with aluminum sign 2 feet SE of corner monument.

SKETCH, WITH COURSE AND DISTANCE TO ADJACENT CORNER IF DETERMINED IN THIS SURVEY.
 (May Sketch or Paste Reproduction on Reverse Side.)



Brass cap set 4" above ground.

Brass cap stamped:

T.14N. R.66W.
 1/4 S.33
 1/4 S. 4
 T.13N.

LS 519 1973

I, R.L. Hudson certify that I have carefully performed ~~or reviewed~~ the work done on the diagrammed corner as reported on this recordation form and approve the same.

R.L. Hudson
 Signature of Surveyor

Wyoming L.S. No. 519
 Registration No.

STATE OF WYOMING,

Office of Clerk and Recorder,

County of Daramie

This "corner record" was filed for record on the 29th day of May, 1973, was noted on the cross-index plat and is assigned page No. 14-66, in book No. ONE.

County Official

Cross Index No. 13 T. 66 R. 6th Mer.
 _____ T. _____ R. _____ Mer.
 _____ T. _____ R. _____ Mer.
 _____ T. _____ R. _____ Mer.
 _____ T. _____ R. _____ Mer.
 _____ T. _____ R. _____ Mer.
 _____ T. _____ R. _____ Mer.

289681

Photographed.....
Indexed K
Posted SM

The State of Wyoming }
County of Laramie } SS

This instrument was filed for record
at 9:54 o'clock A.M. on the
29 day of May
A. D. 19 23 and duly recorded in
Book on page

John D. Williams

County Clerk & Ex-Officio Register of Deeds
Theresa Argent Deputy